

**MODEL WP BA-11 EXPANSION CHASSIS
DOCUMENTATION PACKAGE**

W91001065



14321 MYFORD RD. TUSTIN, CA 92680 (714)730-6250

THEY ARE THE ONLY TWO

THEY ARE THE ONLY TWO

MODEL WP BA-11 EXPANSION CHASSIS

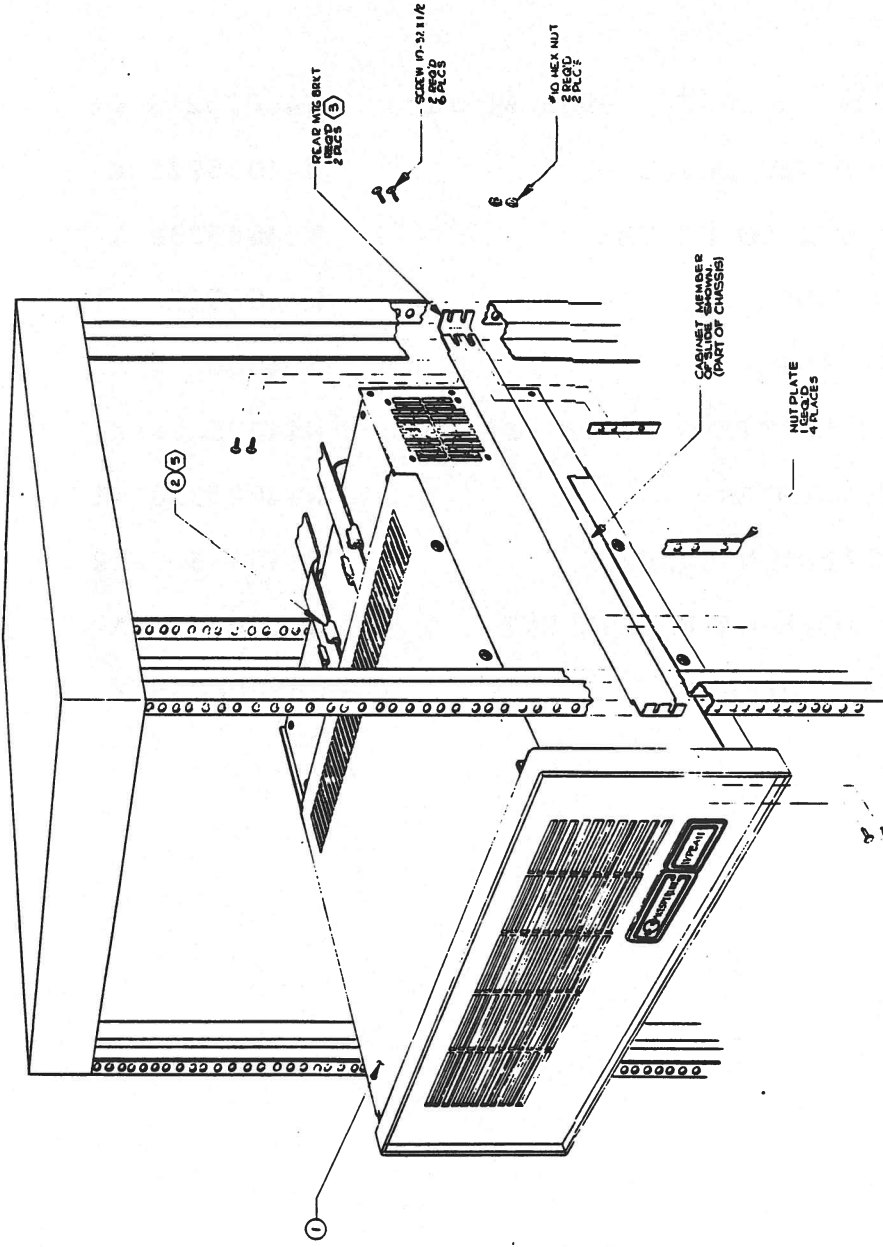
TABLE OF CONTENTS

<u>DESCRIPTION</u>	<u>DOCUMENT NUMBER</u>
INSTALLATION INSTRUCTION	W44005304 X1
ASSEMBLY - CABLE DD11 DK/CK POWER WP909/WPBA11	W44005213 B1
ASSEMBLY - CABLE BA11 POWER SUPPLY	W44005221 X
ASSEMBLY - CABLE BA11 TB1 TO FILTER	W44005239 X
ASSEMBLY - CABLE BA11 FANS	W44005262 X1
ASSEMBLY - CABLE BA11 FILTER	W44005270 X
ASSEMBLY - POWER SUPPLY MOUNTING PLATE BA11	W44005288 X
SUBASSEMBLY - BA11 FRONT COVER	W44005320 X1
TOP ASSEMBLY - BA11 EXPANSION CHASSIS	W44005346 X2
WIRE LIST - BACKPLANE DD11-CK EQUIVALENT	W44004612 A
NATIONAL POWER TECH P/S SCHEMATIC	W51000065 X

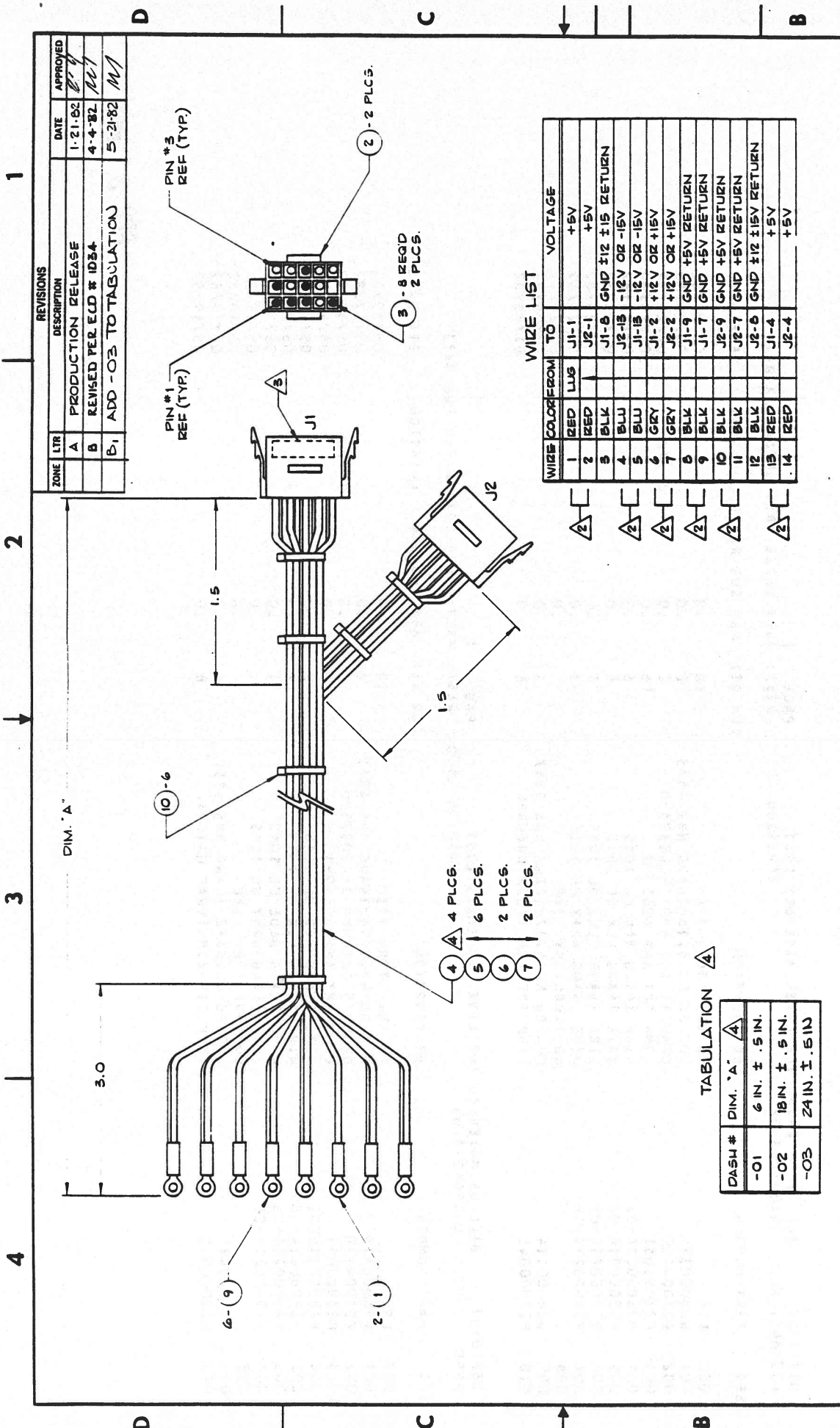
DATE	REV	DESCRIPTION	DATE	APPROVED
11/9/81	1	PILOT REL	11/9/81	REL
	2	ADDED NOTE 6		

INSTRUCTIONS

1. REMOVE CABINET MEMBER OF SLIDES FROM CHASSIS.
2. ATTACH SLIDE BRACKET (M111) TO REAR OF CABINET MEMBER AS SHOWN.
3. ADJUST BRACKET TO PROPER LENGTH TO FIT INSIDE CABINET VERTICAL RAILS AS SHOWN.
4. INSTALL CHASSIS.
5. LOCATION AND QUANTITY UP TO USERS DISCRETION (4 SUPPLIED)
6. MTS. HARDWARE INCLUDED WITH SLIDES. NOT SUPPLIED EXTRA.



UNLESS OTHERWISE SPECIFIED, DIMENSIONS ARE IN INCHES. DECIMALS ARE TO BE ROUNDED UP TO THE NEXT HIGHER DECIMAL.		CONTRACT NO.	
QTY	CODE	DATE OF MODIFICATION	DATE
1	0001	11/9/81	11/9/81
PARTS LIST		APPROVALS	
1. CABINET MEMBER OF SLIDE		BY: [Signature]	
2. SLIDE BRACKET (M111)		CHECKED: [Signature]	
3. PEAR WTR BOLT		DATE: 11/9/81	
4. SCREW #10-32 1/2		BY: [Signature]	
5. #10 HEX NUT		CHECKED: [Signature]	
6. NUT PLATE		DATE: 11/9/81	
7. CABINET MEMBER OF CHASSIS		BY: [Signature]	
8. MTS. HARDWARE		CHECKED: [Signature]	
9. EXPANSION CHASSIS		DATE: 11/9/81	
10. INSTALLATION INSTRUCTION WPB11		BY: [Signature]	
11. EXPANSION CHASSIS		CHECKED: [Signature]	
12. 4-4005304		DATE: 11/9/81	
13. SCALE 1/8" = 1"		BY: [Signature]	
14. SHEET 1 OF 1		CHECKED: [Signature]	



REVISIONS			
ZONE	LTR	DESCRIPTION	DATE
A		PRODUCTION RELEASE	1-21-82
B		REVISED PER ELD # 1034	4-4-82
B1		ADD -03 TO TABULATION	5-21-82

WIRE	COLOR	FROM	TO	VOLTAGE
1	RED	LUG	J1-1	+5V
2	RED		J2-1	+5V
3	BLK		J1-8	GND ±12 ±15 RETURN
4	BLU		J2-15	-12V OR -15V
5	BLU		J1-15	-12V OR -15V
6	GRY		J1-2	+12V OR +15V
7	GRY		J2-2	+12V OR +15V
8	BLK		J1-9	GND +5V RETURN
9	BLK		J1-7	GND +5V RETURN
10	BLK		J2-9	GND +5V RETURN
11	BLK		J2-7	GND +5V RETURN
12	BLK		J2-6	GND ±12 ±15V RETURN
13	RED		J1-4	+5V
14	RED		J2-4	+5V

DASH #	DIM. "A"
-01	6 IN. ± .5 IN.
-02	18 IN. ± .5 IN.
-03	24 IN. ± .5 IN.

WESPERLINE™ Division of VESPERCORP AMMHEIM, CALIFORNIA		ASSY - CABLE DD11-DK/CK POWER - WP909/WPBA11	
CONTRACT NO. _____ APPROVALS: DRAWN G. WOOD CHECKED W. B. B.		DATE: 1-21-82 1-22-82 1-25-82	
MATERIAL: _____ FINISH: _____		SIZE: _____ CODE IDENT NO. _____ DRAWING NO. W44005213	
UNLESS OTHERWISE SPECIFIED DIMENSIONS ARE IN INCHES TOLERANCES ARE: FRACTIONS DECIMALS ANGLES ± .XX ± .XX ± /		DO NOT SCALE DRAWING	
APPLICATION: _____ NEXT ASSY: _____ USED ON: _____		SCALE: _____ SHEET 1 OF 1	

SEE TABULATION FOR WIRE LENGTH.
 IDENTIFY WITH P/N & REV LTR WHERE SHOWN.
 WIRES TO BE INSTALLED IN SAME LUG.
 SEE SEPARATE PARTS LIST.
 NOTES: UNLESS OTHERWISE SPECIFIED.

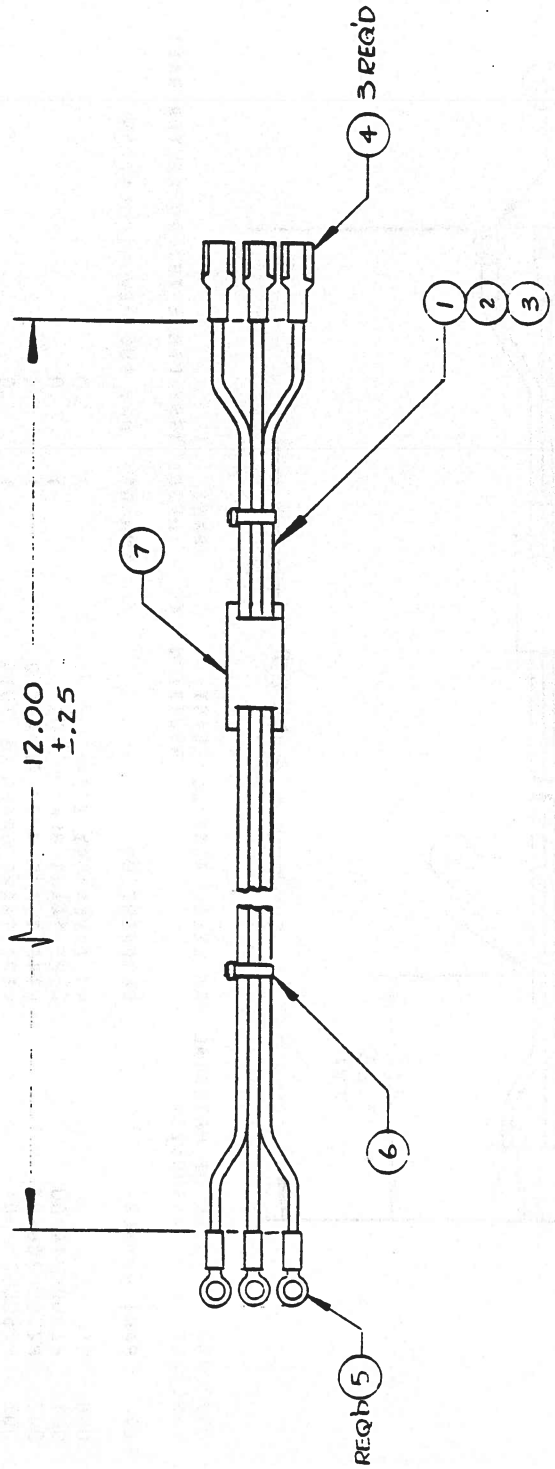
SEQ	PART NUMBER	DESCRIPTION	CON	QTY	HRS	SUB	REV	L	LOCATION	EFF	DATE
000	LSC	NO INVENTORY ITEM	10		.0					01/25/82	
001	W2600CC315	LUG RG NO.6;16-14AWG HHS 4873	2		.0				J1,J2	01/25/82	
002	P2300412C	CONN 15 SKT AMP 1-480323-0	2		.0					01/25/82	
003	P23003031	CONN SKT AMP 60619-1	16		.0					01/25/82	
004	P28000214-02	WIRE 14AWG RED UL 1015	2		.0					01/25/82	
005	P28000214-00	WIRE 14AWG BLK UL 1015	3		.0					01/25/82	
006	P2800G214-06	WIRE 14AWG BLUE UL 1015	1		.0					01/25/82	
007	P28000214-08	WIRE 14AWG GRAY UL 1015	1		.0					01/25/82	
008		NO INVENTORY ITEM			.0					03/29/82	
009	W2600CC414	LUG RG NO.6;12-10AWG HHS 5157	6		.0					03/29/82	
010	P2300CG045	TYRP TYB-23M TYRAP NATURAL	6		.0					01/25/82	

SEQ	PART NUMBER	DESCRIPTION	CON	QTY	HRS	SUB	REV	L	LOCATION	EFF	DATE
000	LSC	NO INVENTORY ITEM	10		.0					01/25/82	
001	W2600CC315	LUG RG NO.6;16-14AWG HHS 4873	2		.0				J1,J2	01/25/82	
002	P23004120	CONN 15 SKT AMP 1-480323-0	2		.0					01/25/82	
003	P23003031	CONN SKT AMP 60619-1	16		.0					01/25/82	
004	P28000214-02	WIRE 14AWG RED UL 1015	6		.0					01/25/82	
005	P2800C214-00	WIRE 14AWG BLK UL 1015	9		.0					01/25/82	
006	P280C0214-06	WIRE 14AWG BLUE UL 1015	3		.0					01/25/82	
007	P28000214-08	WIRE 14AWG GRAY UL 1015	3		.0					01/25/82	
008		NO INVENTORY ITEM			.0					03/29/82	
009	W2600CC414	LUG RG NO.6;12-10AWG HHS 5157	6		.0					03/29/82	
010	P230000045	TYRP TYB-23M TYRAP NATURAL	6		.0					01/25/82	

SEQ	PART NUMBER	DESCRIPTION	CON	QTY	HRS	SUB	REV	L	LOCATION	EFF	DATE
000	LSC	NO INVENTORY ITEM	10		.0					05/19/82	
001	W260000315	LUG RG NO.6;16-14AWG HHS 4873	2		.0				J1,J2	05/19/82	
002	P23004120	CONN 15 SKT AMP 1-480323-0	2		.0					05/19/82	
003	P23003031	CONN SKT AMP 60619-1	16		.0					05/19/82	
004	P28000214-02	WIRE 14AWG RED UL 1015	8		.0					05/19/82	
005	P28000214-00	WIRE 14AWG BLK UL 1015	12		.0					05/19/82	
006	P28000214-06	WIRE 14AWG BLUE UL 1015	4		.0					05/19/82	
007	P28000214-08	WIRE 14AWG GRAY UL 1015	4		.0					05/19/82	
008		NO INVENTORY ITEM			.0					05/19/82	
009	W260000414	LUG RG NO.6;12-10AWG HHS 5157	6		.0					05/19/82	
010	P230000045	TYRP TYB-23M TYRAP NATURAL	8		.0					05/19/82	

APR 2 1982

REVISIONS		
LTR	DESCRIPTION	DATE
X	PILOT RELEASE	4-7-81
		APPROVED



PLEASE RELEASE
NOT FOR CONTROL

JUN 10 1982

05/20/82 BILL OF MATERIAL TOP LEVEL ASSEMBLY LIST PAGE 1
ASSEMBLY NO. W44005221 REVISION X DESC: ASSY-CABLE WPBA11 PWR SUP

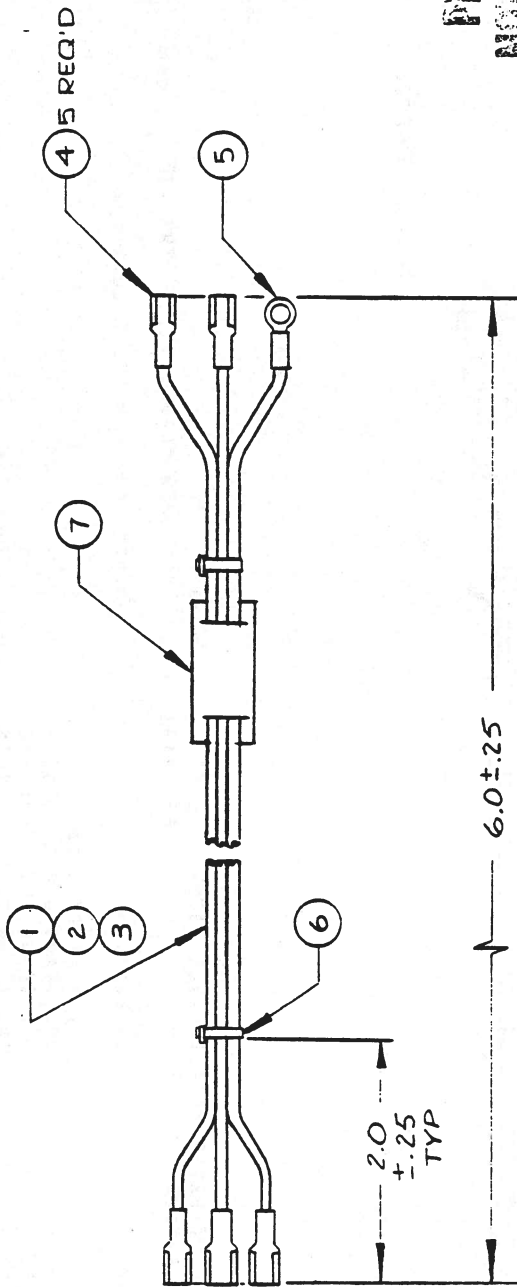
CON QTY HRS SUB REV L LOCATION

SEQ	PART NUMBER	DESCRIPTION	CON	QTY	HRS	SUB	REV	L	LOCATION
000	LSC	NO INVENTORY ITEM	7	.0					
001	P28000214-00	WIRE 14AWG BLK UL 1015	1	.0					
002	P28000206-09	WIRE 14AWG WHT MIL-W-76B	1	.0					
003	P28000214-05	WIRE 14AWG GREEN UL 1015	1	.0					
004	W260000612	QDLG .250X.032 PAND DV14-250FI	3	.0					
005	W26000216	LUG RG NO.6:22-18AWG MHS 4809	3	.0					
006	P23000045	TYRP TYB-23M TYRAP NATURAL	A/R	.0					
007	P74000001	ID MARKER CABLE IDENT HUGHES	1	.0					

TOLERANCES UNLESS OTHERWISE SPECIFIED		FRACTIONS DEC ANGLES		APPROVALS		DATE	
±	±	±	±	±	±	±	±
DRAWN				4-7-82			
CHECKED				4-7-82			
44005221				BAIL			
NEXT AGY				OFFD ON			
APPLICATION							
WESPERLINE™				CABLE ASSY, BAIL			
Division of WESPERCORP ANAHEIM, CALIFORNIA				PWR.SUPPLY			
SCALE				NONE			
SIZE				B			
DRAWING NO.				44005221			
DO NOT SCALE DRAWING				SHEET 1 OF 1			

REVISIONS

LTR	DESCRIPTION	DATE	APPROVED
X	PILOT RELEASE	4-7-82	11/1



PROHIBITED BY MIL-STD-883C
NOT UNDER MIL. CONTROL

05/20/82 BILL OF MATERIAL TOP LEVEL ASSEMBLY LIST PAGE 1
ASSEMBLY NO. W44005239 REVISION X DESC: ASSY CABLE TB1 TO FILTER BA11

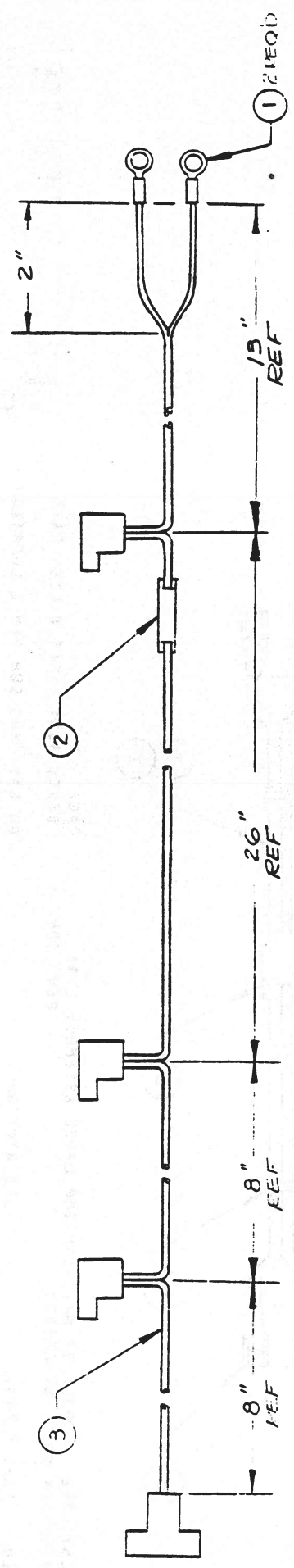
SEQ	PART NUMBER	DESCRIPTION	CON	QTY	HRS	SUB	REV	L	LOCATION
000	LSC	NO INVENTORY ITEM	7		.0				
001	P28000214-00	WIRE 14AWG BLK UL 1015	1		.0				
002	P28000206-09	WIRE 14AWG WHT MIL-W-768	1		.0				
003	P28000214-05	WIRE 14AWG GREEN UL 1015	1		.0				
004	W260000612	QDLG .250X.032 PAND DV14-250F1	5		.0				
005	W260000216	LUG RG NO.6/22-18AWG HHS 4809	1		.0				
006	P230000045	TYRP TYB-23M TYRAP NATURAL	A/R		.0				
007	P740000001	ID MARKER CABLE IDENT HUGHES	1		.0				

JUN 10 1982

TOLERANCES UNLESS OTHERWISE SPECIFIED		FRACTIONS DEC ANGLES		APPROVALS		DATE	
±	±	±	±	DRAWN	CHECKED	DATE	DATE
				11/1	11/1	4-7-82	4-7-82
WESPERLINE Division of WESPERSCOPE ANAHEIM, CALIFORNIA				CABLE ASSY BA11 TB1 TO FILTER			
SCALE		SIZE		DRAWING NO.		SHEET	
NONE		B		44005239		1 of 1	
DO NOT SCALE DRAWING							

44005239	BA11
NEXT ASSY	USED ON
APPLICATION	

REVISIONS		
LTR	DESCRIPTION	DATE
X	PILOT RELEASE	4-7-82
XI	PILOT RELEASE	7-7-82



05/20/82 ASSEMBLY NO. W44005262 BILL OF MATERIAL TOP LEVEL ASSEMBLY LIST REVISION X PAGE 1 DESC: ASSY CABLE PCB FANS BAIL

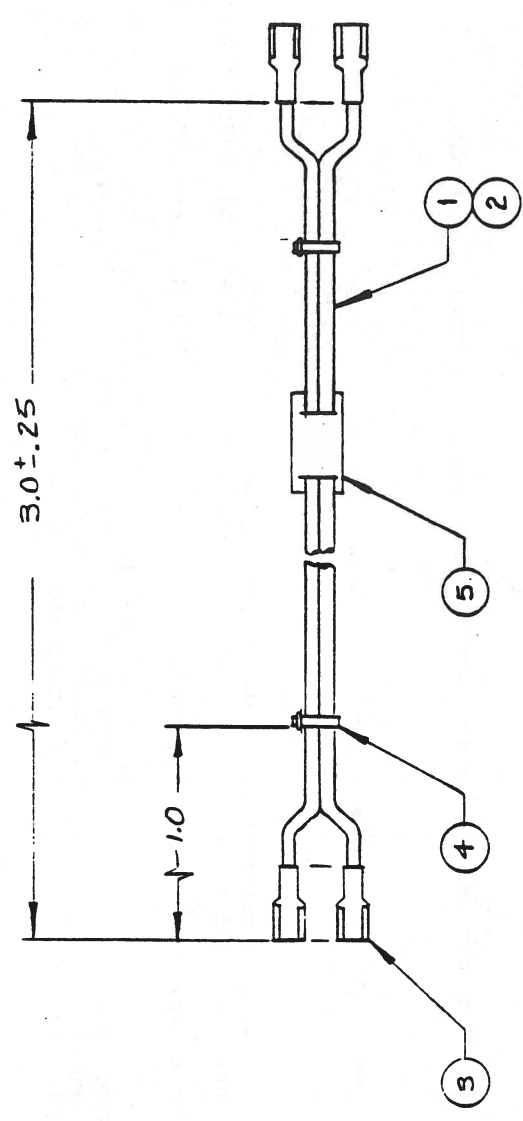
SEQ	PART NUMBER	DESCRIPTION	CON	QTY	HRS	SUB	REV	L	LOCATION
000	LSC	NO INVENTORY ITEM		3					.0
001	W260000216	LUG RG NO.6;22-18AWG HHS 4809		2					.0
002	P740000001	ID MARKER CABLE IDENT HUGHES		1					.0
003	W490000037	FAN CORD-COMPUTER CRAFT CC4082		1					.0

PRELIMINARY RELEASE
NOT UNDER REV. CONTROL

TOLERANCES UNLESS OTHERWISE SPECIFIED		FRACTIONS DEC ANGLES	
±	±	±	±
APPROVALS		DATE	
DRAWN		3-3-82	
CHECKED		6-9-82	
WESPERLINE™ Division of WESPERCORP ANAHEIM, CALIFORNIA		ASSY, CABLE, BAIL FANS	
SCALE		SIZE	DRAWING NO.
—		B	44005262
DO NOT SCALE DRAWING			SHEET 1 of 1

JUL 08 1982

REVISIONS		
LTR	DESCRIPTION	DATE
X	PILOT RELEASE	4-6-82



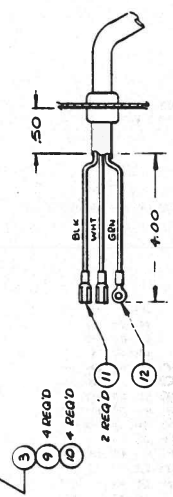
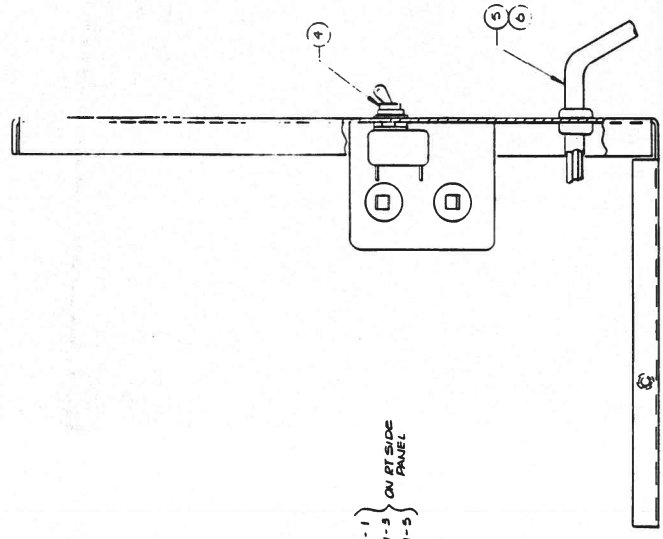
05/20/82		BILL OF MATERIAL TOP LEVEL ASSEMBLY LIST		PAGE 1
ASSEMBLY NO. W44005270		REVISION X		DESC: ASSY CABLE FILTER BA11
SEQ	PART NUMBER	DESCRIPTION	CON	QTY
000	LSC	NO INVENTORY ITEM		5
001	P28000206-09	WIRE 14AWG WHT MIL-W-76B		1
002	P28000214-00	WIRE 14AWG BLK UL 1015		1
003	W260000612	QDLG .250X.032 PAND DV14-250FI		4
004	P230000045	TYRP TYB-23M TYRAP NATURAL		2
005	P740000001	ID MARKER CABLE IDENT HUGHES		1

RECEIVED 7 PM 10 1982

JUN 10 1982

TOLERANCES UNLESS OTHERWISE SPECIFIED		FRACTIONS DEC ANGLES		± ± ±	
APPROVALS	DATE				
DRAWN	4-6-82				
CHECKED					
44005288 BA11		NEXT ASSY USED ON			
APPLICATION					
WESPERLINE™		CABLE ASSY, BA11			
Division of WESPERCORP ANAHEIM, CALIFORNIA		FILTER			
SCALE		SIZE	DRAWING NO.		
1/8"		B	44005270		
DO NOT SCALE DRAWING		SHEET 1 of 1			

REVISIONS		DATE	APPROVED
1	REVISED	5-7-64	W



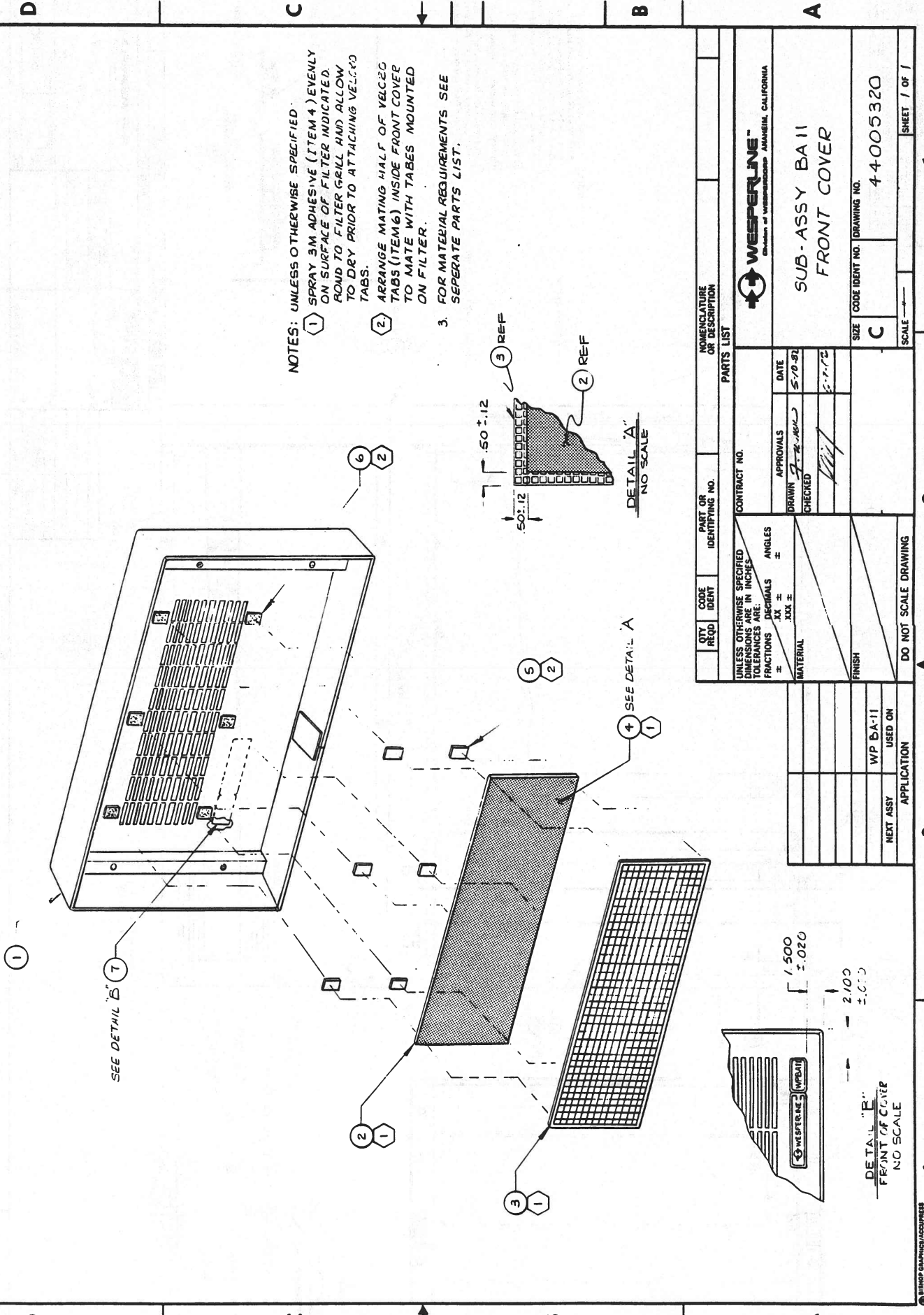
QTY		CODE	PART OR IDENTIFYING NO	NOMENCLATURE OR DESCRIPTION	
REQ'D		DEVT	PARTS LIST		
REQ'D		DEVT	CONTRACT NO		
REQ'D		DEVT	DATE		
REQ'D		DEVT	CHECKED		
REQ'D		DEVT	MATERIAL		
REQ'D		DEVT	FRESH		
REQ'D		DEVT	DO NOT SCALE DRAWING		
REQ'D		DEVT	APPLICATION		
REQ'D		DEVT	W4400S346		
REQ'D		DEVT	NEXT ASY		
REQ'D		DEVT	USED ON		
REQ'D		DEVT	ASSEMBLY		
REQ'D		DEVT	PWP SUPPLY MTG.		
REQ'D		DEVT	PLATE BAIL		
REQ'D		DEVT	44003288		
REQ'D		DEVT	SCALE 1-1		
REQ'D		DEVT	SHEET 1 OF 1		

SEQ	PART NUMBER	DESCRIPTION	CON	QTY	HRS	SUB	REV	L	LOCATION	EFF	DATE
000	LSC	NO INVENTORY ITEM	14		.0					05/19/82	
001	W44005197-X	PWR SUP MTG PLATE WPBA11	1		.0					05/19/82	
002		NO INVENTORY ITEM			.0					05/19/82	
003	W29001104	FILTER RFI 10AMP APFS1000L CDI	1		.0					05/19/82	
004	W24000523	CB 10A AIRPAX T21-0-10A-01-11A	1		.0					05/19/82	
005	W28000115	PWR CRD ELECTRO CORD E3017/8FT	1		.0					05/19/82	
006	W29000031	CLMP SR6P3-4 STRAIN RELIEF	1		.0					05/19/82	
007	W44005270	ASSY CABLE FILTER BA11	1		.0	S				05/19/82	
008	W44005239	ASSY CABLE TB1 TO FILTER BA11	1		.0	S				05/19/82	
009	W47000336	SCR 6-32X5/16PHPH MS51957-27	4		.0					05/19/82	
010	W48000038	WASHER 6 FLAT MS 15795-805	4		.0					05/19/82	
011	W26000612	QDLG .250X.032 PAND DV14-250FI	2		.0					05/19/82	
012	W26000216	LUG RG NO.6;22-18AWG HHS 4809	1		.0					05/19/82	
013	W46000022	NUT 6-32 HEX MS 35649-264	1		.0					05/19/82	
014	W480000723	WASHER 6 INT TH MS35333-71	1		.0					05/19/82	

NOT UNDER REV. CONTROL

JUN 10 1982

REVISIONS			
ZONE	LTR	DESCRIPTION	DATE
X		PILOT RELEASE	5-2-72
XI		RELOCATED LABEL ON F COVERS	10-11-82



- NOTES: UNLESS OTHERWISE SPECIFIED:
1. SPRAY 3M ADHESIVE (ITEM 4) EVENLY ON SURFACE OF FILTER INDICATED. ROUND TO FILTER GRILL AND ALLOW TO DRY PRIOR TO ATTACHING VELCRO TABS.
 2. ARRANGE MATING HALF OF VELCRO TABS (ITEM 6) INSIDE FRONT COVER TO MATE WITH TABS MOUNTED ON FILTER.
 3. FOR MATERIAL REQUIREMENTS SEE SEPARATE PARTS LIST.

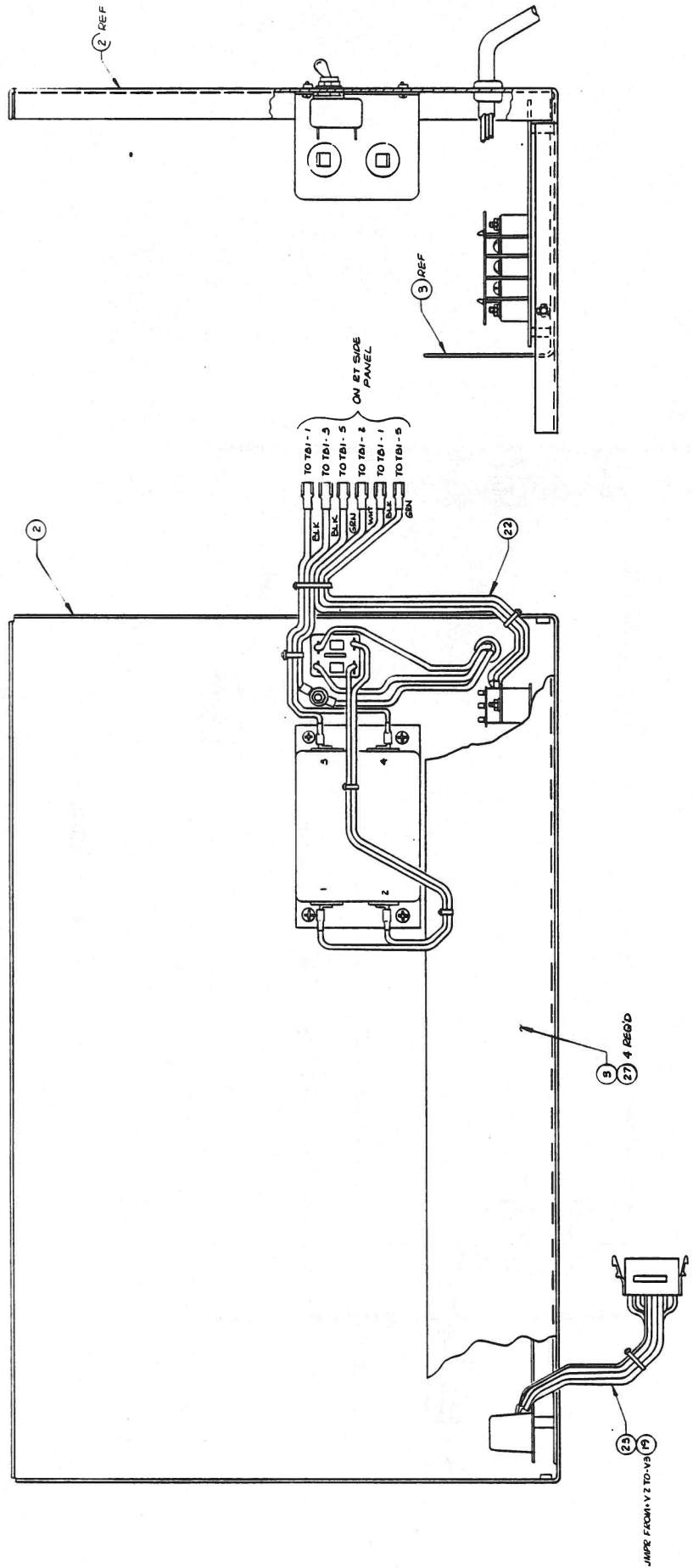
QTY REQ		CODE IDENT	PART OR IDENTIFYING NO.	NOMENCLATURE OR DESCRIPTION	
PARTS LIST					
UNLESS OTHERWISE SPECIFIED DIMENSIONS ARE IN INCHES. TOLERANCES ARE:		CONTRACT NO.			
FRACTIONS	DECIMALS	ANGLES	DATE		
±	±	±	5/10/82		
±	±	±	APPROVALS		
±	±	±	DRAWN 5-2-72		
±	±	±	CHECKED 5-2-72		
MATERIAL		FINISH			
NEXT ASSY		APPLICATION			
WP 5A-11		USED ON			
DO NOT SCALE		DRAWING			
SIZE		CODE IDENT NO.		DRAWING NO.	
C		44005320		44005320	
SCALE		SHEET		1 OF 1	



SUB-ASSY BALL FRONT COVER

1 2 3 4 5 6 7 8

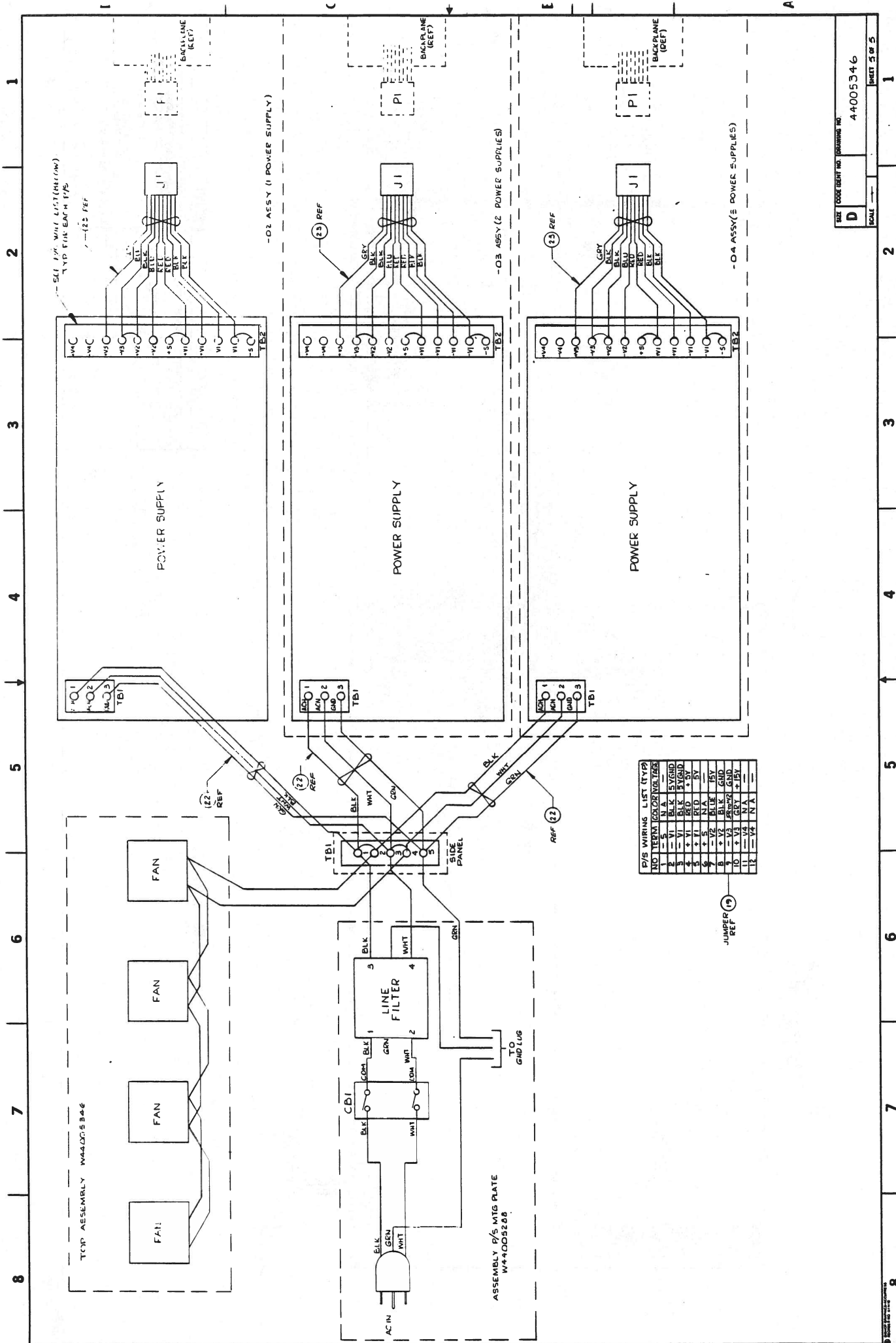
REVISIONS	DATE	APPROVED
ZONE LTR		



SECTION C-C
-03 ASSEMBLY

QTY	CODE	IDENTIFYING NO.	PART OR IDENTIFYING NO.	NOMENCLATURE OR DESCRIPTION
PARTS LIST				
UNLESS OTHERWISE SPECIFIED, DIMENSIONS ARE IN INCHES. TOLERANCES ARE: FRACTIONS DECIMALS ANGLES				
MATERIAL				
FINISH				
DO NOT SCALE DRAWING				
CONTRACT NO.				
DATE				
SHEET 1 OF 5				
WEEPERLINE				
TOP ASSEMBLY				
WPBA11				
EXP CHASSIS				
SIZE CODE IDENT NO. DRAWING NO.				
D W44-005946				
SCALE 1-1				
SHEET 3 OF 5				

1 2 3 4 5 6 7 8



C6/29/82 BILL OF MATERIAL TOP LEVEL ASSEMBLY LIST
 ASSEMBLY NO. W44005346-01

PAGE 1
 DESC: ASSY WPBA11 EXP CHASSIS NO P/S

SEQ	PART NUMBER	DESCRIPTION	CON QTY	HRS	SUB	REV	L	LOCATION	EFF DATE
000	LSC	NO INVENTORY ITEM	31	.0					C5/19/82
001	W44005064-X	CHASSIS EXPANSION WPBA11	1	.0					C5/19/82
002	W44005288-01	ASSY P/S MTG PLATE BA11-NO P/S	1	.0	S				C5/19/82
003		NO INVENTORY ITEM		.0					C5/19/82
004	W29000809	FAN ETRI 760-98-YH-182-115	1	.0					C5/19/82
005	W44005262	ASSY CABLE PCB FANS BA11	1	.0	S				C5/19/82
006	W44005320	SUB ASSY BA11 FRONT COVER	1	.0	S				C6/24/82
007	W26001206	TERM STRIP SPOS KULKA 599-5-UH	1	.0					C5/19/82
008	W49000029	PCGD 1650-F/SAE NYLN CRD GUIDE	54	.0					C5/19/82
009	W29000060	GRMT CATERPILLER HHS 2692	1	.0					C5/19/82
010	W49000334	SLIDE BA11 CHAS TRAK C230D124	1	.0					C5/19/82
011	W44005072-01-X	COVER TCP WPBA11 EXP CHASSIS	1	.0					C5/19/82
012	W44005072-02-X	COVER BOTTOM WPBA11 EXP CHAS	1	.0					C5/19/82
013	W44005080-X	COVER PWR SUP WPBA11 EXP CHAS	1	.0					C5/19/82
014	W47002209	SCR 5-32X3/8 SELF TAPPING	12	.0					C5/19/82
015	W47000542	SCR 8-32X3/8 PHPH MS51957-43	4	.0					C5/19/82
016	W29000058	FAN TORIN TA450 A30109-10 115V	3	.0					C5/19/82
017	W48000731	WASHER 8 INT TOOTH MS35333-72	16	.0					C5/19/82
018		NO INVENTORY ITEM		.0					C5/19/82
019		NO INVENTORY ITEM		.0					C5/19/82
020	W47001417	SCR 6-32X1/4 FHPH MS24693-C24	20	.0					C5/19/82
021		NO INVENTORY ITEM		.0					C5/19/82
022		NO INVENTORY ITEM		.0					C5/19/82
023		NO INVENTORY ITEM		.0					C5/19/82
024	W47001458	SCR 6-32X1/2 FHPH MS24693-C28	2	.0					C5/19/82
025	W46000030	NUT 8-32 HEX MS 35649-284	2	.0					C5/19/82
026	W48000723	WASHER 6 INT TH MS35333-71	2	.0					C5/19/82
027		NO INVENTORY ITEM		.0					C5/19/82
028	W47001623	SCREW SELF TAPFHPH-8-32X.38	4	.0					C5/19/82
029	W26001214	JUMPER STRIP KULKA 600J	2	.0					C5/19/82
030	W26001222	TABS KLIPITITE KULKA KT547	5	.0					C5/19/82
031	W26001230	TAB KLIPITITE KULKA KT546	5	.0					C5/19/82

PRELIMINARY RELEASE
 NOT UNDER FINAL CONTROL

JUL 09 1982

SEQ	PART NUMBER	DESCRIPTION	CON	QTY	HRS	SUB	REV	L	LOCATION	EFF	DATE
000	LSC	NO INVENTORY ITEM	31		.0					05/19/82	
001	W44005064-X	CHASSIS EXPANSION WPBA11	1		.0					05/19/82	
002	W44005288-01	ASSY P/S MTG PLATE BA11-NO P/S	1		.0	S				05/19/82	
003	W510C0065	P/S NAT-PWR TECH 25A NT200-133	2		.0					05/19/82	
004	W29000209	FAN ETRI 760-98-XH-182-115	1		.0					05/19/82	
005	W44005262	ASSY CABLE PCB FANS BA11	1		.0	S				05/19/82	
006	W44005320	SUB ASSY BA11 FRONT COVER	1		.0	S				06/24/82	
007	W26001206	TERM STRIP SPOS KULKA 599-5-UH	1		.0					05/19/82	
008	W490C0029	PCGD 1650-F/SAE NYLN CRD GUIDE	54		.0					05/19/82	
009	W290C0080	GRMT CATERPILLER HHS 2692	1		.0					05/19/82	
010	W490C0334	SLIDE BA11 CHAS TRAK C230D124	1		.0					05/19/82	
011	W44005072-01-X	COVER TCP WPBA11 EXP CHASSIS	1		.0					05/19/82	
012	W44005072-02-X	COVER BOTTOM WPBA11 EXP CHAS	1		.0					05/19/82	
013	W44005080-X	COVER PWR SUP WPBA11 EXP CHAS	1		.0					05/19/82	
014	W47002209	SCR 9-32X3/8 SELF TAPPING	12		.0					05/19/82	
015	W47000542	SCR 9-32X3/8 PHPH MS51957-43	4		.0					05/19/82	
016	W29000858	FAN TORIN TA450 A30108-10 115V	3		.0					05/19/82	
017	W49000731	WASHER 8 INT TOOTH MS35333-72	16		.0					05/19/82	
018		NO INVENTORY ITEM			.0					05/19/82	
019	W26001081	TB JUMPER STRAP CINCH 141-J	2		.0					05/19/82	
020	W47001417	SCR 6-32X1/4 FHPH MS24693-C24	20		.0					05/19/82	
021		NO INVENTORY ITEM			.0					05/19/82	
022	W44005221	ASSY-CABLE WPBA11 PWR SUP	2		.0	S				05/19/82	
023	W44005213-03	ASSY-CABLE DD11-DK/CK PWR BA11	2		.0	S				05/19/82	
024	W47001458	SCR 6-32X1/2 FHPH MS24693-C28	2		.0					05/19/82	
025	W4600C030	NUT 8-32 HEX MS 35649-284	2		.0					05/19/82	
026	W480C0723	WASHER 6 INT TH MS35333-71	2		.0					05/19/82	
027	W47001615	SCR 8-32X5/16FHPH MS24693-C47	8		.0					05/19/82	
028	W470C1623	SCREW SELF TAPFHPH-8-32X.38	4		.0					05/19/82	
029	W26001214	JUMPER STRIP KULKA 600J	2		.0					05/19/82	
030	W26001222	TABS KLIPITITE KULKA KT547	5		.0					05/19/82	
031	W26001230	TAB KLIPITITE KULKA KT546	5		.0					05/19/82	

SEQ	PART NUMMER	EXCEPT *	DESCRIPTION	CON	QTY	HRS	SUB	REV	L	LOCATION	EFF	DATE
000	LSC		NO INVENTORY ITEM	31		.0					05/19/82	
001	W440C5064-X		CHASSIS EXPANSION WPBA11	1		.0					05/19/82	
002	W44005288-01		ASSY P/S MTG PLATE BA11-NO P/S	1		.0	S				05/19/82	
003	W510C0065		P/S NAT-PWR TECH 25A NT200-133	1		.0					05/19/82	
004	W29000809		FAN ETRI 760-98-XH-182-115	1		.0					05/19/82	
005	W440C5262		ASSY CABLE PCB FANS BA11	1		.0	S				05/19/82	
006	W44005320		SUB ASSY BA11 FRONT COVER	1		.0	S				06/24/82	
007	W25001206		TERM STRIP 5POS KULKA 599-5-UH	1		.0					05/19/82	
008	W490C0029		PCGD 1650-F/SAE NYLN CRD GUIDE	54		.0					05/19/82	
009	W29000080		GRMT CATERPILLER HHS 2692	1		.0					05/19/82	
010	W490C0334		SLIDE BA11 CHAS TRAK C230D124	1		.0					05/19/82	
011	W44005072-01-X		COVER TCP WPBA11 EXP CHASSIS	1		.0					05/19/82	
012	W440C5072-02-X		COVER BOTTOM WPBA11 EXP CHAS	1		.0					05/19/82	
013	W440C5080-X		COVER PWR SUP WPBA11 EXP CHAS	1		.0					05/19/82	
014	W47002209		SCR 8-32X3/8 SELF TAPPING	12		.0					05/19/82	
015	W47000542		SCR 9-32X3/8 PHPH MS51957-43	4		.0					05/19/82	
016	W29000858		FAN TORIN TA450 A30108-10 115V	3		.0					05/19/82	
017	W48000731		WASHER 8 INT TOOTH MS35333-72	16		.0					05/19/82	
018			NO INVENTORY ITEM			.0					05/19/82	
019	W26001081		T9 JUMPER STRAP CINCH 141-J	1		.0					05/19/82	
020	W470C1417		SCR 6-32X1/4 FHPH MS24693-C24	20		.0					05/19/82	
021			NO INVENTORY ITEM			.0					05/19/82	
022	W440C5221		ASSY-CABLE WPBA11 PWR SUP	1		.0	S				05/19/82	
023	W44005213-03		ASSY-CABLE DD11-DK/CK PWR BA11	1		.0	S				05/19/82	
024	W47001458		SCR 6-32X1/2 FHPH MS24693-C28	2		.0					05/19/82	
025	W46000030		NUT 8-32 HEX MS 35649-284	2		.0					05/19/82	
026	W48000723		WASHER 5 INT TH MS35333-71	2		.0					05/19/82	
027	W47001615		SCR 8-32X5/16FHPH MS24693-C47	4		.0					05/19/82	
028	W47001623		SCREW SELF TAPFHPH-8-32X.38	4		.0					05/19/82	
029	W26001214		JUMPER STRIP KULKA 600J	2		.0					05/19/82	
030	W260C1222		TABS KLIPTITE KULKA KT547	5		.0					05/19/82	
031	W260C1230		TAS KLIPTITE KULKA KT546	5		.0					05/19/82	

06/29/82 BILL OF MATERIAL TOP LEVEL ASSEMBLY LIST											PAGE 1
ASSEMBLY NO. W44005346-04											DESC: ASSY WPBA11 EXP CHASSIS 3 P/S
REVISION X1											
SEQ	PART NUMBER	DESCRIPTION	CCN	QTY	HRS	SUB	REV	L	LOCATION	EFF DATE	
000	LSC	NO INVENTORY ITEM		31	.0					C5/19/82	
001	W440C5064-X	CHASSIS EXPANSION WPBA11		1	.0					C5/19/82	
002	W440C5288-01	ASSY P/S MTG PLATE BA11-NO P/S		1	.0	S				C5/19/82	
003	W510C0065	P/S NAT-PWR TECH 25A NT200-133		3	.0					C5/19/82	
004	W290C0059	FAN ETRI 760-96-XH-182-115		1	.0					C5/19/82	
005	W440C5262	ASSY CABLE PCB FANS BA11		1	.0	S				C5/19/82	
006	W440C532C	SUB ASSY BA11 FRONT COVER		1	.0	S				G6/24/82	
007	W26001206	TERM STRIP SPOS KULKA 599-5-UH		1	.0					C5/19/82	
008	W49000029	PCGD 1650-F/SAE NYLN CRD GUIDE		54	.0					C5/19/82	
009	W290C0080	GRMT CATERPILLER HHS 2692		1	.0					C5/19/82	
010	W49000334	SLIDE BA11 CHAS TRAK C230D124		1	.0					C5/19/82	
011	W440C5072-01-X	COVER TOP WPBA11 EXP CHASSIS		1	.0					C5/19/82	
012	W440C5072-02-X	COVER BOTTOM WPBA11 EXP CHAS		1	.0					C5/19/82	
013	W440C5080-X	COVER PWR SUP WPBA11 EXP CHAS		1	.0					C5/19/82	
014	W470C2209	SCR 8-32X3/8 SELF TAPPING		12	.0					C5/19/82	
015	W47000542	SCR 8-32X3/8 PHPH MS51957-43		8	.0					C5/19/82	
016	W290C0856	FAN TORIN TA450 A301C8-10 115V		3	.0					C5/19/82	
017	W480C0731	WASHER 8 INT TOOTH MS35333-72		20	.0					C5/19/82	
018		NO INVENTORY ITEM			.0					C5/19/82	
019	W26001081	TB JUMPER STRAP CINCH 141-J		3	.0					C5/19/82	
020	W47001417	SCR 6-32X1/4 FHPH MS24693-C24		20	.0					C5/19/82	
021		NO INVENTORY ITEM			.0					C5/19/82	
022	W44005221	ASSY-CABLE WPBA11 PWR SUP		3	.0	S				C5/19/82	
023	W44005213-03	ASSY-CABLE DD11-DK/CK PWR BA11		3	.0	S				C5/19/82	
024	W47001458	SCP 6-32X1/2 FHPH MS24693-C28		2	.0					C5/19/82	
025	W46000030	NUT 8-32 HEX MS 35649-284		2	.0					C5/19/82	
026	W48000723	WASHER 6 INT TH MS35333-71		2	.0					C5/19/82	
027	W47001615	SCR 8-32X5/16FHPH MS24693-C47		8	.0					C5/19/82	
028	W470C1623	SCREW SELF TAPFHPH-8-32X.38		4	.0					C5/19/82	
029	W26001214	JUMPER STRIP KULKA 600J		2	.0					C5/19/82	
030	W26001222	TABS KLIPITTE KULKA KT547		5	.0					C5/19/82	
031	W26001230	TAB KLIPITTE KULKA KT546		5	.0					C5/19/82	

SEQ	PART NUMBER	DESCRIPTION	CON	QTY	HRS	SUB	REV	L	LOCATION	EFF	DATE
000	LSC	NO INVENTORY ITEM	31		-0					05/19/82	
001	W440053064-X	CHASSIS EXPANSION WPBA11	1		-0					05/19/82	
002	W440052986-01	ASSY P/S MTG PLATE BA11-NO P/S	1		-0	S				06/09/82	
003		NO INVENTORY ITEM			-0					05/19/82	
004	W29000783	FAN ETRI 760-98XH-181-11220	1		-0					06/02/82	
005	W44005262	ASSY CABLE PCB FANS BA11	1		-0	S				05/19/82	
006	W44005320	SUB ASSY BA11 FRCNT COVER	1		-0	S				06/24/82	
007	W26001206	TERM STRIP SPOS KULKA 599-5-UH	1		-0					05/19/82	
008	W4900C029	PCGD 1650-F/SAE NYLN CRD GUIDE	54		-0					05/19/82	
009	W2900C080	GRMT CATERPILLER HHS 2692	1		-0					05/19/82	
010	W49000334	SLIDE BA11 CHAS TRAK C230D124	1		-0					05/19/82	
011	W44005072-01-X	COVER TOP WPBA11 EXP CHASSIS	1		-0					05/19/82	
012	W44005072-02-X	COVER BOTTOM WPBA11 EXP CHAS	1		-0					05/19/82	
013	W44005080-X	COVER PWR SUP WPBA11 EXP CHAS	1		-0					05/19/82	
014	W4700C2209	SCR 8-32X3/8 SELF TAPPING	12		-0					05/19/82	
015	W47000542	SCR 8-32X3/8 PHPH MS51957-43	4		-0					05/19/82	
016	W2900C0325	FAN ETRI 760-125XR-2181-11220	3		-0					06/02/82	
017	W48000731	WASHER 8 INT TOOTH MS33333-72	16		-0					05/19/82	
018		NO INVENTORY ITEM			-0					05/19/82	
019		NO INVENTORY ITEM			-0					05/19/82	
020	W47001417	SCR 6-32X1/4 FHPH MS24693-C24	20		-0					05/19/82	
021		NO INVENTORY ITEM			-0					05/19/82	
022		NO INVENTORY ITEM			-0					05/19/82	
023		NO INVENTORY ITEM			-0					05/19/82	
024	W47001458	SCR 6-32X1/2 FHPH MS24693-C26	2		-0					05/19/82	
025	W4600C030	NUT 8-32 HEX MS 35649-284	2		-0					05/19/82	
026	W4800C0723	WASHER 6 INT TH MS33333-71	2		-0					05/19/82	
027		NO INVENTORY ITEM			-0					05/19/82	
028	W47001623	SCREW SELF TAPFHPH-8-32X.38	4		-0					05/19/82	
029	W26001214	JUMPER STRIP KULKA 600J	2		-0					05/19/82	
030	W26001222	TABS KLIPITTE KULKA KT547	5		-0					05/19/82	
031	W26001230	TAB KLIPITTE KULKA KT546	5		-0					05/19/82	

SEQ	PART NUMBER	DESCRIPTION	CON	QTY	HRS	SUB	REV	L	LOCATION	EFF	DATE
000	LSC	NO INVENTORY ITEM	31		.0					C5/19/82	
001	W440C5064-X	CHASSIS EXPANSION WPBA11	1		.0					C5/19/82	
002	W440C5283-01	ASSY P/S MTG PLATE BA11-NO P/S	1		.0	S				06/09/82	
003	W51000065	P/S NAT-PWR TECH 25A NT200-133	1		.0					05/19/82	
004	W290000783	FAN ETRI 760-98XH-181-11220	1		.0					06/02/82	
005	W44005262	ASSY CARLE PCB FANS BA11	1		.0	S				C5/19/82	
006	W440C532C	SUB ASSY BA11 FRONT COVER	1		.0	S				06/24/82	
007	W26001206	TERM STRIP 5POS KULKA 599-5-UH	1		.0					C5/19/82	
008	W4900C029	PCGD 1650-F/SAE NYLN CRD GUIDE	54		.0					C5/19/82	
009	W2900008C	GRMT CATERPILLER HHS 2692	1		.0					C5/19/82	
010	W49000334	SLIDE BA11 CHAS TRAK C230D124	1		.0					05/19/82	
011	W440C5072-01-X	COVER TOP WPBA11 EXP CHASSIS	1		.0					05/19/82	
012	W440C5072-02-X	COVER BOTTOM WPBA11 EXP CHAS	1		.0					05/19/82	
013	W440C5060-X	COVER PWR SUP WPBA11 EXP CHAS	1		.0					C5/19/82	
014	W470C2209	SCR 5-32X3/8 SELF TAPPING	12		.0					05/19/82	
015	W470C0542	SCR 8-32X3/8 PHPH MS51957-43	4		.0					05/19/82	
016	W29000825	FAN ETRI 760-125XR-2181-11220	3		.0					06/02/82	
017	W48000731	WASHER 8 INT TOOTH MS35333-72	16		.0					05/19/82	
018		NO INVENTORY ITEM			.0					05/19/82	
019	W26001081	T3 JUMPER STRAP CINCH 141-J	1		.0					05/19/82	
020	W47001417	SCR 6-32X1/4 FHPH MS24693-C24	20		.0					05/19/82	
021		NO INVENTORY ITEM			.0					05/19/82	
022	W44005221	ASSY-CABLE WPBA11 PWR SUP	1		.0	S				05/19/82	
023	W44005213-03	ASSY-CABLE DD11-DK/CK PWR BA11	1		.0	S				05/19/82	
024	W47001458	SCR 6-32X1/2 FHPH MS24693-C28	2		.0					C5/19/82	
025	W460CC03C	NUT 8-32 HEX MS 35649-284	2		.0					05/19/82	
026	W480C0723	WASHER 6 INT TH MS35333-71	2		.0					05/19/82	
027	W47001615	SCR 5-32X5/16FHPH MS24693-C47	4		.0					C5/19/82	
028	W47001623	SCREW SELF TAPFHPH-8-32X.38	4		.0					05/19/82	
029	W26001214	JUMPER STRIP KULKA 600J	2		.0					05/19/82	
030	W26001222	TABS KLIPTITE KULKA KT547	5		.0					05/19/82	
031	W26001230	TAB KLIPTITE KULKA KT546	5		.0					C5/19/82	

06/29/82 BILL OF MATERIAL TOP LEVEL ASSEMBLY LIST			PAGE 1		DESC: ASSY WPBA11 EXP CHAS 2 PS 23GV		
ASSEMBLY NO. W44005346-07			REVISION X1				
SEQ	PART NUMBER	DESCRIPTION	CON	QTY	HRS	SUB	REV L LOCATION EFF DATE
000	LSC	NO INVENTORY ITEM	31		.0		C5/19/82
001	W44005064-X	CHASSIS EXPANSION WPBA11	1		.0		05/19/82
002	W4400528E-01	ASSY P/S MTG PLATE BA11-NO P/S	1		.0	S	06/09/82
003	W51000065	P/S NAT-PWR TECH 25A NT200-133	2		.0		05/19/82
004	W29000783	FAN ETRI 76C-98XH-181-11220	1		.0		06/02/82
005	W44005262	ASSY CABLE PCB FANS BA11	1		.0	S	05/19/82
006	W44005320	SUB ASSY BA11 FRONT COVER	1		.0	S	06/24/82
007	W26001206	TERM STRIP 5POS KULKA 599-5-UH	1		.0		05/19/82
008	W49000029	PCGD 1650-F/SAE NYLN CRD GUIDE	54		.0		05/19/82
009	W29000080	GRMT CATERPILLER HHS 2692	1		.0		05/19/82
010	W49000334	SLIDE BA11 CHAS TRAK C230D124	1		.0		05/19/82
011	W44005072-01-X	COVER TOP WPBA11 EXP CHASSIS	1		.0		05/19/82
012	W44005072-02-X	COVER BOTTOM WPBA11 EXP CHAS	1		.0		05/19/82
013	W44005080-X	COVER PWR SUP WPBA11 EXP CHAS	1		.0		05/19/82
014	W47002209	SCR 2-32X3/8 SELF TAPPING	12		.0		05/19/82
015	W47000542	SCR 8-32X3/8 PHPH MS51957-43	4		.0		05/19/82
016	W29000825	FAN ETRI 760-125XR-2191-11220	3		.0		06/02/82
017	W48000731	WASHER 8 INT TOOTH MS35333-72	16		.0		05/19/82
018		NO INVENTORY ITEM			.0		05/19/82
019	W26001081	T3 JUMPER STRAP CINCH 141-J	2		.0		05/19/82
020	W47001417	SCR 6-32X1/4 FHPH MS24693-C24	20		.0		05/19/82
021		NO INVENTORY ITEM			.0		05/19/82
022	W44005221	ASSY-CABLE WPBA11 PWR SUP	2		.0	S	05/19/82
023	W44005213-03	ASSY-CABLE DD11-DK/CK PWR BA11	2		.0	S	05/19/82
024	W47001458	SCR 6-32X1/2 FHPH MS24693-C28	2		.0		05/19/82
025	W46000030	NUT 8-32 HEX MS 35649-284	2		.0		05/19/82
026	W48000723	WASHER 6 INT TH MS35333-71	2		.0		05/19/82
027	W47001615	SCR 8-32X5/16FHPH MS24693-C47	8		.0		05/19/82
028	W47001623	SCREW SELF TAPFHPH-8-32X.38	4		.0		05/19/82
029	W26001214	JUMPER STRIP KULKA 600J	2		.0		05/19/82
030	W26001222	TABS KLIPITITE KULKA KT547	5		.0		05/19/82
031	W26001230	TAB KLIPITITE KULKA KT546	5		.0		05/19/82

SEQ	PART NUMBER	DESCRIPTION	CON QTY	HRS SUB REV	L LOCATION	EFF DATE
000	LSC	NO INVENTORY ITEM	31	.0		05/19/82
001	W440C5064-X	CHASSIS EXPANSION WPBA11	1	.0		05/19/82
002	W440C5288-01	ASSY P/S MTG PLATE BA11-NO P/S	1	.0 S		06/09/82
003	W510GC065	P/S NAT-PWR TECH 25A NT200-133	3	.0		05/19/82
004	W290CC783	FAN ETRI 760-98XH-181-11220	1	.0		06/02/82
005	W440C5262	ASSY CABLE PCE FANS BA11	1	.0 S		05/19/82
006	W440C532C	SUB ASSY BA11 FRONT COVER	1	.0 S		06/24/82
007	W260C1206	TERM STRIP 5POS KULKA 599-5-UH	1	.0		05/19/82
008	W49000029	PCGD 1650-F/SAE NYLN CRD GUIDE	54	.0		05/19/82
009	W290CC080	GRMT CATERPILLER HHS 2692	1	.0		05/19/82
010	W4900C334	SLIDE BA11 CHAS TRAK C230D124	1	.0		05/19/82
011	W440C5072-01-X	COVER TOP WPBA11 EXP CHASSIS	1	.0		05/19/82
012	W440C5072-02-X	COVER BOTTOM WPBA11 EXP CHAS	1	.0		05/19/82
013	W440C508C-X	COVER PWR SUP WPBA11 EXP CHAS	1	.0		05/19/82
014	W47002209	SCR 8-32X3/8 SELF TAPPING	12	.0		05/19/82
015	W470C0542	SCR 8-32X3/8 PHPH MS51957-43	8	.0		05/19/82
016	W29000925	FAN ETRI 76C-125XR-2181-11220	3	.0		06/02/82
017	W480C0731	WASHER 8 INT TOOTH MS35333-72	20	.0		05/19/82
018		NO INVENTORY ITEM		.0		05/19/82
019	W260G1081	TB JUMPER STRAP CINCH 141-J	3	.0		05/19/82
020	W47001417	SCR 6-32X1/4 FHPH MS24693-C24	20	.0		05/19/82
021		NO INVENTORY ITEM		.0		05/19/82
022	W440C5221	ASSY-CABLE WPBA11 PWR SUP	3	.0 S		05/19/82
023	W44005213-03	ASSY-CABLE DD11-DK/CK PWR BA11	3	.0 S		05/19/82
024	W470C1458	SCR 6-32X1/2 FHPH MS24693-C28	2	.0		05/19/82
025	W46000030	NUT 8-32 HEX MS 35649-284	2	.0		05/19/82
026	W48000723	WASHER 6 INT TH MS35333-71	2	.0		05/19/82
027	W47001615	SCR 8-32X5/16FHPH MS24693-C47	8	.0		05/19/82
028	W47001623	SCREW SELF TAPFHPH-8-32X.38	4	.0		05/19/82
029	W26001214	JUMPER STRIP KULKA 600J	2	.0		05/19/82
030	W26001222	TABS KLIPITITE KULKA KT547	5	.0		05/19/82
031	W2600123C	TAB KLIPITITE KULKA KT546	5	.0		05/19/82

REVISIONS		
LTR	DESCRIPTION	DATE
A	PROD. REL	4-19-82

APR 19 1982

WIRE LIST - BACKPLANE DDII-CK EQUIV.	
TOLERANCES UNLESS OTHERWISE SPECIFIED FRACTIONS DEC. ANGLES	WESPERLINE™ <small>Division of WESPERCORP, ANAHEIM, CALIFORNIA</small>
APPROVALS LSC 4-15-82 RM 4-19-82	SCALE 2 A W44004612
DO NOT SCALE DRAWING	SHEET 0 OF 21

DDII-CK BACKPLANE
W44004612

SIGNAL NAME	PIN NAME
+15/+8V	C01U1 C02U1 C03U1 C04U1
+20V	A02U1 A02V1 A02V2 A03U1 A03V1 A03V2
+5V (1)	A01A2 A02A2 A03A2 A04A2
+5V (2)	B01A2 B02A2 B03A2 B04A2 B02D1
+5V (3)	C01A2 C02A2 C03A2 C04A2
+5V (4)	D01A2 D02A2 D03A2 D04A2
+5V (5)	E01A2 E02A2 E03A2 E04A2
+5V (6)	F01A2 F02A2 F03A2 F04A2
+5V (A)	A01A2 B01A2 C01A2 D01A2 E01A2 F01A2

SIGNAL NAMEPIN NAME

+5V (B)

A02A2
B02A2
C02A2
D02A2
E02A2
F02A2

+5V (C)

A03A2
B03A2
C03A2
D03A2
E03A2
F03A2

+5V (D)

A04A2
B04A2
C04A2
D04A2
E04A2
F04A2

-15V

C01B2
C02B2
C03B2
C04B2
D04B2
D03B2
D02B2
D01B2
E01B2
E02B2
E03B2
E04B2
F04B2
F03B2
F02B2
F01B2

-5V

B02V2
B03V2

A BG IN

D01U2
F01B1

A BG OUT

D01V2
F01A1

A BR OUT

D01J2
F01P1
F01U2SIGNAL NAMEPIN NAME

A IN

D01H1
E01M1

A INT A

D01N1
F01U1

A INT B

C01J1
F01K2

A INT ENB A

D01M1
F01V1

A INT ENB B

C01L1
F01H2

A OUT HIGH

D01K1
E01M2

A OUT LOW

D01D1
E01N1

A SEL 0

D01F1
E01S2

A SEL 4

D01E1
E01R2

A SEL 6

D01C1
E01S1

A SER 2

D01J1
E01T2

A SSYN IN H

D01V1
E01B1

AC LO L

B01F1
B02F1
C01V1
C02V1
C03V1
C04V1
B03F1
B04F1

B BG IN

D02U2
F02B1

B BG OUT

D02V2
F02A1

<u>SIGNAL NAME</u>	<u>PIN NAME</u>	<u>SIGNAL NAME</u>	<u>PIN NAME</u>
B BR OUT	D02J2 F02P1 F02U2	BBSY L	A01P2 A02P2 F01D1 F02D1 F03D1 F04D1 A03P2 A04P2
B IN	D02H1 E02M1	BG4 A	B01E2 D01S2
B INT A	D02N1 F02U1	BG4 B	D01T2 D02S2
B INT B	C02J1 F02K2	BG4 C	D02T2 D03S2
B INT ENB A	D02M1 F02V1	BG4 D	D03T2 D04S2
B INT ENB B	C02L1 F02H2	BG4 E	B04E2 D04T2
B OUT HIGH	D02K1 E02M2	BG5 A	B01B1 D01P2
B OUT LOW	D02D1 E02N1	BG5 B	D01R2 D02P2
B SEL 0	D02F1 E02S2	BG5 C	D03R2 D03P2
B SEL 4	D02E1 E02R2	BG5 D	D03R2 D04P2
B SEL 6	D02C1 E02S1	BG5 E	B04B1 D04R2
B SER 2	D02U1 E02T2	BG6 A	B01A1 D01M2
B SSYN IN H	D02V1 E02B1	BG6 B	D01N2 D02M2
BB+15	A02R1 A03R1 C03U1	BG6 C	D02N2 D03M2
BB+5	B02D1 B03D1	BG6 D	D03N2 D04M2
BB-15	A02S1 A03S1 C03B2		

<u>SIGNAL NAME</u>	<u>PIN NAME</u>
BG6 E	B04A1
BG7 A	D04N2
BG7 B	A01V1
BG7 C	D01K2
BG7 D	D01L2
BG7 E	D02K2
BR4 L	D02L2
	D03K2
	D03L2
	D04K2
	A04V1
	D04L2
	B01D2
	B02D2
	D01H2
	D02H2
	D03H2
	D04H2
	B03D2
	B04D2
BR5 L	B01C1
	B02C1
	D01F2
	D02F2
	D03F2
	D04F2
	B03C1
	B04C1
BR6 L	A01U2
	A02U2
	D01E2
	D02E2
	D03E2
	D04E2
	A03U2
	A04U2
BR7 L	A01T2
	A02T2
	D01D2
	D02D2
	D03D2
	D04D2
	A03T2
	A04T2
SIGNAL NAME	PIN NAME
BUS A00 L	B01H2
	B02H2
	E01H2
	E02H2
	E03H2
	E04H2
	B03H2
	B04H2
BUS A01 L	B01H1
	B02H1
	E01H1
	E02H1
	E03H1
	E04H1
	B03H1
	B04H1
BUS A02 L	B01J2
	B02J2
	E01F1
	E02F1
	E03F1
	E04F1
	B03J2
	B04J2
BUS A03 L	B01J1
	B02J1
	E01V2
	E02V2
	E03V2
	E04V2
	B03J1
	B04J1
BUS A04 L	B01K2
	B02K2
	E01U2
	E02U2
	E03U2
	E04U2
	B03K2
	B04K2
BUS A05 L	B01K1
	B02K1
	E01V1
	E02V1
	E03V1
	E04V1
	B03K1
	B04K1

<u>SIGNAL NAME</u>	<u>PIN NAME</u>	<u>SIGNAL NAME</u>	<u>PIN NAME</u>
BUS A06 L	B01L2 B02L2 E01U1 E02U1 E03U1 E04U1 B03L2 B04L2	BUS A12 L	B01P2 B02P2 E01C1 E02C1 E03C1 E04C1 B03P2 B04P2
BUS A07 L	B01L1 B02L1 E01P2 E02P2 E03P2 E04P2 B03L1 B04L1	BUS A13 L	B01P1 B02P1 E01K2 E02K2 E03K2 E04K2 B03P1 B04P1
BUS A08 L	B01M2 B02M2 E01N2 E02N2 E03N2 E04N2 B03M2 B04M2	BUS A14 L	B01R2 B02R2 E01K1 E02K1 E03K1 E04K1 B03R2 B04R2
BUS A09 L	B01M1 B02M1 E01R1 E02R1 E03R1 E04R1 B03M1 B04M1	BUS A15 L	B01R1 B02R1 E01D2 E02D2 E03D2 E04D2 B03R1 B04R1
BUS A10 L	B01N2 B02N2 E01P1 E02P1 E03P1 E04P1 B03N2 B04N2	BUS A16 L	B01S2 B02S2 E01E2 E02E2 E03E2 E04E2 B03S2 B04S2
BUS A11 L	B01N1 B02N1 E01L1 E02L1 E03L1 E04L1 B03N1 B04N1	BUS A17 L	B01S1 B02S1 E01D1 E02D1 E03D1 E04D1 B03S1 B04S1

<u>SIGNAL NAME</u>	<u>PIN NAME</u>
BUS D00 L	A01C1
	A03C1
	C01S2
	C02S2
BUS D01 L	C03S2
	C04S2
	A03C1
	A04C1
BUS D02 L	A01D2
	A02D2
	C01R2
	C02R2
BUS D03 L	C03R2
	C04R2
	A03D2
	A04D2
BUS D04 L JMP	F01E2
	F02E2
	F03E2
	F04E2
BUS D05 L	A01D1
	A02D1
	C01U2
	C02U2
BUS D06 L JMP	C03U2
	C04U2
	A03D1
	A04D1
BUS D07 L JMP	C02U2
	F02E2
	F01L1
	F02L1
BUS D08 L	F03L1
	F04L1
	A01E2
	A02E2
BUS D09 L JMP	C01T2
	C02T2
	C03T2
	C04T2
BUS D10 L JMP	A03E2
	A04E2
	C02T2
	F02L1
BUS D11 L	F01N2
	F02N2
	F03N2
	F04N2
BUS D12 L	A01E1
	A02E1
	C01N2
	C02N2
BUS D13 L	C03N2
	C04N2
	A03E1
	A04E1
BUS D14 L JMP	C02N2
	F02N2
	F01F1
	F02F1
BUS D15 L	F03F1
	F04F1
	A01F2
	A02F2
BUS D16 L JMP	C01P2
	C02P2
	C03P2
	C04P2
BUS D17 L JMP	A03F2
	A04F2
	C02P2
	F02F1
BUS D18 L	F01F2
	F02F2
	F03F2
	F04F2
BUS D19 L	A01F1
	A02F1
	C01V2
	C02V2
BUS D20 L JMP	C03V2
	C04V2
	A03F1
	A04F1
BUS D21 L JMP	C02V2
	F02F2
	F01N2
	F02N2

SIGNAL NAME

BUS D07 L

BUS D07 L JMP

BUS D08 L

BUS D08 L JMP

BUS D09 L

BUS D10 L

PIN NAME

F01H1
F02H1
F03H1
F04H1
A01H2
A02H2
C01M2
C02M2
C03M2
C04M2
A03H2
A04H2
C02M2
F02H1
F01K1
F02K1
F03K1
F04K1
A01H1
A02H1
C01L2
C02L2
C03L2
C04L2
A03H1
A04H1
C02L2
F02K1
A01J2
A02J2
C01K2
C02K2
C03K2
C04K2
A03J2
A04J2
A01J1
A02J1
C01J2
C02J2
C03J2
C04J2
A03J1
A04J1

SIGNAL NAME

BUS D11 L

BUS D12 L

BUS D13 L

BUS D14 L

BUS D15 L

C BG IN

C BG OUT

PIN NAME

A01K2
A02K2
C01H1
C02H1
C03H1
C04H1
A03K2
A04K2
A01K1
A02K1
C01H2
C02H2
C03H2
C04H2
A03K1
A04K1
A01L2
A02L2
C01F2
C02F2
C03F2
C04F2
A03L2
A04L2
A01L1
A02L1
C01E2
C02E2
C03E2
C04E2
A03L1
A04L1
A01M2
A02M2
C01D2
C02D2
C03D2
C04D2
A03M2
A04M2
D03U2
F03B1
D03V2
F03A1

<u>SIGNAL NAME</u>	<u>PIN NAME</u>
C BR OUT	D03J2 F03P1 F03U2
C IN	D03H1 E03M1
C INT A	D03N1 F03U1
C INT B	C03J1 F03K2
C INT ENB A	D03M1 F03V1
C INT ENB B	C03L1 F03H2
C OUT HIGH	D03K1 E03M2
C OUT LOW	D03D1 E03N1
C SEL 0	D03P1 E03S2
C SEL 4	D03E1 E03R2
C SEL 6	D03C1 E03S1
C SER 2	D03J1 E03T2
C SSYN IN H	D03V1 E03B1
C0 L	B01U2 B02U2 E01J2 E02J2 E03J2 E04J2 B03U2 B04U2

<u>SIGNAL NAME</u>	<u>PIN NAME</u>
C1 L	B01T2 B02T2 E01F2 E02F2 E03F2 E04F2 B03T2 B04T2
D BG IN	D04U2 F04B1
D BG OUT	D04V2 F04A1
D BR OUT	D04J2 F04P1 F04U2
D IN	D04H1 E04M1
D INT A	D04N1 F04U1
D INT B	C04J1 F04K2
D INT ENB A	D04M1 F04V1
D INT ENB B	C04L1 F04H2
D OUT HIGH	D04K1 E04M2
D OUT LOW	D04D1 E04N1
D SEL 0	D04F1 E04S2
D SEL 4	D04E1 E04H2
D SEL 6	D04C1 E04B1
D SER 2	D04J1 E04T2

SIGNAL NAME

D SSYN IN H

DC L

F01D2

F01E1

F01L2

F01M2

F01P2

F02D2

F02E1

F02L2

F02M2

F02P2

F03D2

F03E1

PIN NAME

D04V1
E04B1

B01P2
B02P2
C01N1
C02N1
C03N1
C04N1
B03P2
B04P2

F01D2
F01N1
F01R2

F01E1
F01V2

F01L2
F01R1

F01M2
F01S1

F01P2
F01S2

F02D2
F02N1
F02R2

F02E1
F02V2

F02L2
F02R1

F02M2
F02S1

F02P2
F02S2

F03D2
F03N1
F03R2

F03E1
F03V2

SIGNAL NAME

F03L2

F03M2

F03P2

F04D2

F04E1

F04D2

F04L2

F04M2

F04P2

GND (01)

GND (02)

GND (03)

PIN NAME

F03L2
F03R1

F03M2
F03S1

F03P2
F03S2

F04D2
F04N1
F04R2

F04E1
F04V2

F04R2
F04N1

F04L2
F04R1

F04M2
F04S1

F04P2
F04S2

A01C2
A02C2
A03C2
A04C2
A04T1
A03T1
A02T1
A01T1

B01C2
B02C2
B03C2
B04C2
B04T1
B03T1
B02T1
B01T1

C01C2
C02C2
C03C2
C04C2
C04T1
C03T1
C02T1
C01T1

SIGNAL NAME	PIN NAME
GND (04)	B01E1 B01D1 B04E1 B04D1
GND (05)	F01J2 F02J2 F03J2 F04J2
GND (06)	C01R1 C02R1 C03R1 C04R1
GND (07)	C01P1 C02P1 C03P1 C04P1
GND (08)	A01A1 A02A1 D01L1 D02L1 D03L1 D04L1 A03A1 A04A1
GND (09)	B02E1 B03E1
GND (10)	A01B1 A02B1 F01M1 F02M1 F03M1 F04M1 A03B1 A04B1
	C01D1 C02D1 C03D1 C04D1
SIGNAL NAME	PIN NAME
GND (11)	
GND (12)	
HALT GRANT	
HALT REQ	
INIT L	
INT SSYN	
INTR L	
LTC	

SIGNAL NAME

MSYN L

PIN NAME

B01V1
B02V1
E01E1
E02E1
E03E1
E04E1
B03V1
B04V1

NPG L

A01U1
C01A1
C01B1
C02A1
C02B1
C03A1
C03B1
C04A1
C04B1
A04U1

NPR L

A01S2
A02S2
F01J1
F02J1
F03J1
F04J1
A03S2
A04S2

PA L

A01M1
A02M1
C01C1
C02C1
C03C1
C04C1
A03M1
A04M1

PAR DET

B02E2
B03E2

PAR P0

A02P1
A03P1

PAR P1

A02N1
A03N1

SIGNAL NAME

PB L

PIN NAME

A01N2
A02N2
C01S1
C02S1
C03S1
C04S1
A03N2
A04N2

RESERVE BUS

B02A1
B03A1

SACK L

A01R2
A02R2
F01T2
F02T2
F03T2
F04T2
A03R2
A04R2

SSYN L

F01C1
F02C1
F03C1
F04C1

SSYN L

B01U1
B02U1
E01J1
E02J1
E03J1
E04J1
B03U1
B04U1

SSYN L JMP

E02J1
F02C1

